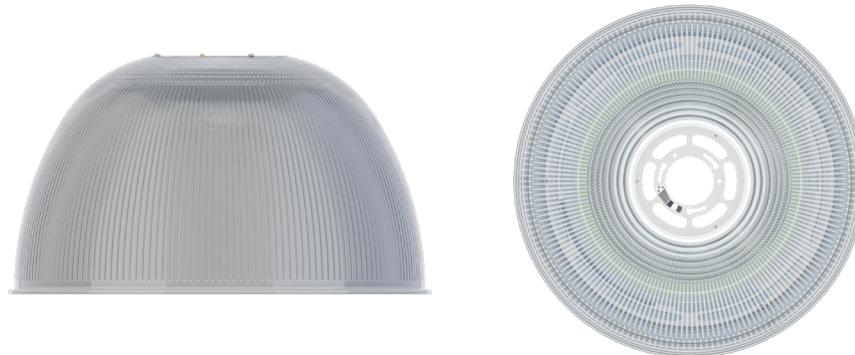


Date	Project	Part #
------	---------	--------



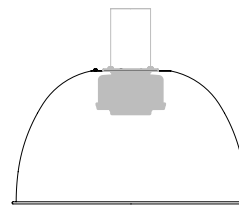
## Features

The optional reflector is available to create a traditional high-bay aesthetic. However, these reflectors are not needed and its installation does not substantially alter the light distribution. The Filamento lamp has integral optics that create a cutoff at 50°, eliminating glare so an external reflector is not required.

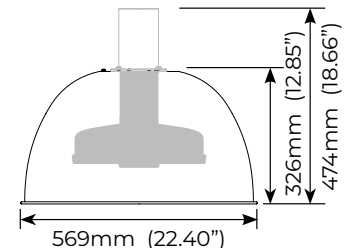
- Solid polycarbonate reflector
- Reflectors are vented to allow for airflow
- Compatible with all ADP mounting bases
- Compatible with all mogul base lamps
- Easy to install - Simply twist and lock assembly to ADP mounting bases, no tools required
- Optional diffuser, drop lens, wireguard accessories
- Matching ADP mounting bases are sold separately
- See website for Installation Guide

## Mechanical

- 1.63 kg / 3.6 lb
- Solid polycarbonate body

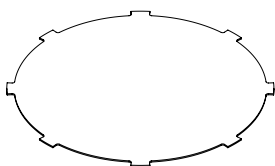


22" Reflector shown with VA6 Lamp

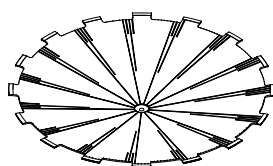


22" Reflector shown with V2L/V2M Lamp

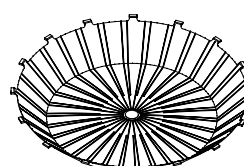
## Compatible Accessories



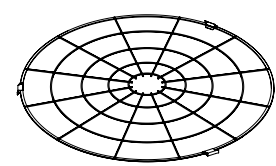
22" UGR Diffuser  
ACC-022-UGR-000-FL



22" Conical Lens  
ACC-022-CNL-000-FL



22" Drop Lens  
ACC-022-DRL-000-FL



22" Wireguard Black  
ACC-022-WBK-000-FL

## Ordering Information

Description	Part Code	Part #
Prismatic Polycarbonate 22" Reflector	03873	RFL-PR22-CL1PC1

1. Inquire for custom color combinations  
 2. [See limited warranty for details](#)  
 3. Specifications subject to change without notice

4. Not intended for use in environments containing airborne corrosive agents such as chemicals, solvents, or cutting fluids